

# The Epistle

March, 2024  
St. Philip Lutheran Church

## Pastor's Message

The Lenten season is fully upon us – a season of introspection and reflection, a season of repentance and contrition. What a springtime of growth for the soul!

I offer you the following observations on fasting from Pope Francis. “Fast from hurting words and say kind words. Fast from sadness and be filled with gratitude. Fast from anger and be filled with patience. Fast from pessimism and be filled with hope. Fast from worries and have trust in God. Fast from complaints and contemplate simplicity. Fast from pressures and be prayerful. Fast from bitterness and fill your hearts with joy. Fast from selfishness and be compassionate to others. Fast from grudges and be reconciled. Fast from words and be silent so you can listen.”

Now read that list again. This time, more slowly, with several seconds of silence between the sentences. Now pray that list. And then be silent...so you can listen...

Now...our Ash Wednesday liturgy contains the following line that we hear every year: “I invite you, therefore, to the discipline of Lent – self-examination and repentance, prayer and fasting, sacrificial giving and works of love.” I dare to say we pay more attention to the first four in that list than we do to the last two. I want us to pursue a PARTICULAR “sacrificial gift and work of love” this Lent at St. Philip.

Camp Agapé is a Lutheran camp in Fuquay-Varina in southern Wake County. It has a long and meaningful history of ministry in our NC Synod and in our state. The Covid pandemic and leadership turnover have hit them hard recently.

Because of this, our Triangle Conference of Lutheran churches has been led by the Holy Spirit to conduct a fundraising effort to assist them with some critical needs. St. Philip has agreed to be a part of this effort.

Many people of St. Philip have benefitted from Camp Agapé over the years as campers, counselors, visitors on retreat or on Via de Cristo weekends, etc. Moreover, our Outreach and Youth Ministry Coordinator, Kai Thurow, essentially grew up there, as his father, Randy Youngquist-Thurow, was their Executive Director for years. We will have a couple of presentations here about Camp Agapé's ministry and needs during the month of March, including one from their new Program Director, Lucas Welch. Please see Kai's article herein for further details. However, I would like to challenge us to rise to the occasion of seeing this opportunity as St. Philip's “sacrificial gift and work of love” for Lent 2024. Please give generously. And even as the liturgy says, “sacrificially.” Thank you in advance for the blessing you will be. (And already are.)

Finally, we are excited to offer our next New Members' class on Saturday, April 20, from 10am until noon here in our Music Room. Please help spread the word!

Sharing the Love of Christ,  
Pastor Tim

### HOLY WEEK SCHEDULE



March 28 & 29, 2024

**Maundy Thursday**

12 noon & 7:00 pm

**Good Friday**

12 noon & 7:00 pm

# Camp Agapé' Financial Appeal (March 3-31)



## A Note from Camp Agapé

“The fact is that the last 3 years at Agapé +Kure Beach, while challenging, have been very good. The mission of Agapé +Kure Beach Ministries continues to be lived out in summer camp, year-round programs, environmental education, and hosted retreat groups.

Summer camp continues to be central to our mission, and it won't be long until we hear the joy and laughter of campers splashing in the pool, looking for critters on the trails, zipping down the zip line, and discovering more about themselves. Every year, we subsidize the true cost of a week of summer camp, which exceeds \$1300. This is nearly double what we charge at \$650 per week. We do this because we know the importance of camp in young peoples' lives.

At the same time, however, the momentum of the last 3 years has been affected by various factors. Not least of which are staffing needs, and the challenges of replacing the swimming pool.

Momentum is increasing though, as the search for a new Executive Director is underway, a new Program Director has been hired, and the 2024 summer staff is growing. This leaves the construction of a new pool as a great opportunity to continue to increase our ministry momentum.

As of March 2024, we are near signing a contract with a local company to build a right-sized new pool to replace our 39-year-old pool. We have \$579,000 raised to complete this project. We'd love to raise another \$171,000 that would allow us significant enhancements to the bathhouse and pool deck area.

A completed pool complex will convey numerous messages including:

- Illustrating the wise management of our donors' gifts and that when we say we're going to finish something, we do.
- Telling our campers that we value them enough to make this improvement specifically for their experience and fun.
- Telling our supporting congregations and community that things are happening and moving forward at Agapé + Kure Beach.

In addition to the pool project, the Triangle Fundraiser will also support the ongoing day-to-day ministry that happens at camp all year long.”

## **A Sacrificial Gift and Work of Love: A Collective Goal of \$171,000 for Camp Agapé**

During the season of Lent this year, alongside at least seven other congregations in our area, we felt the Holy Spirit tugging, and so we decided to lean into this moment with a “sacrificial gift and work of love” to help raise a collective goal of \$171,000 to meet this need.

**A new pool?** Is that really a need? Many of us had the same thoughts initially, but after further conversation, we can assure you that it is in fact a major need for the summer camp ministry that Camp Agapé has become known for. Let's lean into this moment together as the body of Christ so that we can lift up our neighborhood camp in this time of need.

## **How can you give?**

We ask that you prayerfully consider how you might be able to give to this campaign this Lenten season. If you feel so moved, you can give by cash/ check OR online. We ask that you please just indicate in the memo/comments that the gift is for *Camp Agapé* and we'll make sure it gets to camp!

For questions, please contact [Kai@st-philip.org](mailto:Kai@st-philip.org)



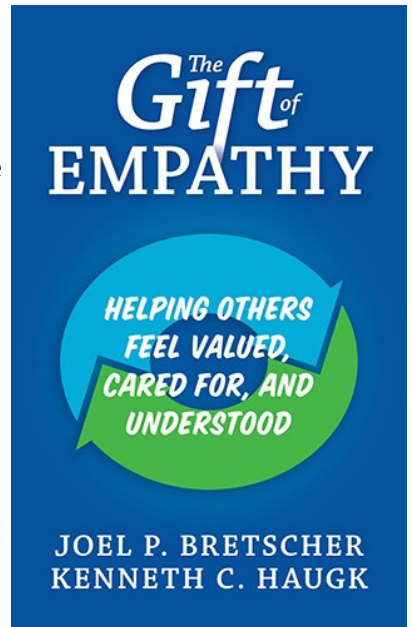
## The Gift Of Empathy Book Study

"Empathy". What does that word bring to mind for you? Have you ever experienced a time when someone truly empathized with you as you were dealing with a situation? If so, you likely felt seen, valued, or understood in a way that made you feel whole. Have you ever truly empathized with someone else and had them say "Wow, thank you so much for understanding me in this situation!" When we empathize with each other, it is truly a gift that we can bring of being present to each other in relationship.

Empathy is a skill that we can develop and improve, and it is not hard to do so! Would you like to explore this topic further? Our Stephen Ministry team will be leading a book study on empathy starting on April 3 for five weeks during the Sunday school hour between services. We will be studying the book, "The Gift of Empathy", which shows many simple and practical ways to show empathy on a daily basis in our family, work, or social relationships. The result of our being truly empathetic to one another in our daily life can be huge as we bring Christ's love to each other.

Would you like to know more? Please contact Pastor Tim, Kathy Blum, or Dan Heyl.

If you are interested, there is a signup sheet in the Narthex, or you can email or call Jane at the church office, as we will need to know how many books to order. Please sign up by Sunday, March 17 so we will be able to order the necessary books in time for April 3.



## be a WELCOMING Presence

**Are you looking for a way to serve in our church?**  
There is a great need for greeters before the 11:00 service every Sunday.

It could not be easier! No training necessary.

All it requires is a willingness to be at church fifteen or twenty minutes before 11:00 and to say "hello", "welcome", or "good morning" to people as they arrive. It is really that simple...just be yourself. There is nothing to it and there is no wrong way to do it; and yet it is a powerful way to serve.

If you are interested please give it a try on Sunday. You can sign up on-line ([Click Here](#)) or through our website or call Jane Gue in the church office if you have any difficulty signing up. For further information please call Barbara Sullivan @ 919 271-3283. Thank you!





## Saturday, April 20 from 10am - Noon

We give thanks for the newcomers that God brings into this faith community!

The New Members Class is an intentional time for people who are new to St. Philip to learn more about this faith community. It's a time to meet others who are newcomers, learn more about the Lutheran tradition, and spend time with Pastor Tim and congregation leaders.

Becoming part of a faith community is a big step but you do not take this step alone. The Holy Spirit has brought you to this place and we look forward to the ministry that we can do together.

St. Philip is a congregation with many and various ministries. This offers lots of opportunities for you to be involved and many ways as you use your God-given gifts and skills in service to others and to the glory of God.

### *Why bother with church membership?*

Church membership has been described as our opportunity to grasp hold of each other in responsibility and love.

### *In joining a church you:*

- Make visible your commitment to Christ and his
- Enter into a relationship of mutual accountability. When we join a church we offer ourselves to one another to be challenged, encouraged, loved, and strengthened.
- Make promises to practice the spiritual disciplines of daily prayer, active service, weekly worship, regular Bible study, on-going fellowship, and generous giving within and through a particular community of faith .

### **Learning about St. Philip**

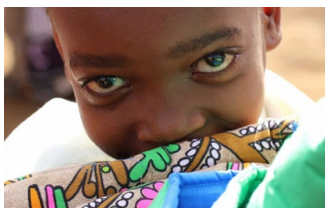
If you would like to learn more about St. Philip membership, come join this class! There is no obligation to join however, this class is designed to help start the journey to being active in the ministries of St. Philip.

Becoming part of a faith community like St Philip is a big step but you do not take this step alone. The Holy Spirit has brought you to this place and we look forward to the ministry that we can do together.

To help us plan for materials and supplies for this class, please sign up [Click Here](#) or call the church office.



## Lutheran World Relief Quilting Group



### **Volunteer to quilt for kids and families in need.**

The Quilters meet in the lower level of the education building. We are looking for willing hands who can use scissors, tie a knot and who enjoy a warm blanket—to help us on the 2nd, 4th & 5th Thursday mornings of the month at 10:00 am

Please consider becoming involved in this worthwhile endeavor.

Contact Barbara Burdette for more information: [bburd45955@aol.com](mailto:bburd45955@aol.com)

## Kingdom Kids (grades K-5)

Kingdom Kids is our Children's Ministry at St. Philip for all children in grades K-5.

This group meets once a month for an hour of fun as we play games, Bible study, music, craft, and do some service projects!

Following our get-together, we have a family dinner for all youth & their family members to participate in. For more information, please email [kai@st-philip.org](mailto:kai@st-philip.org)



### Kingdom Kids (K-5) March Schedule

March 17 - Kingdom Kids (K-5)	4-5pm
Family Dinner (K-12 + families)	5-5:30pm

## Youth Group (grades 6-12)



Our Youth Group for grades 6-12 meets twice a month.

One Sunday we meet at 6pm and the other we meet from 5:30-6:30pm following a family meal for all youth & their families to participate in.

Additionally, Discipleship Academy (our Confirmation program) meets about once a month for a seminar course. Discipleship Academy is available for anyone grade 6+. For more information, contact [kai@st-philip.org](mailto:kai@st-philip.org)

### Youth Group (6-12) March Schedule

March 3 - Youth Group (6-12)	6-7:30pm
March 17 - Family Dinner (K-12 + families)	5-5:30pm



### LYO Assembly

A group of 3 youth and two adults from St. Philip attended the annual Lutheran Youth Organization's (LYO) Statewide Assembly along with over 275 other Lutheran Youth.

This event is planned and led by youth from across the state.

We had a great time in fellowship, worship, small groups, and more as we dove into the theme for the event - "Y'all Means All".





## 100 New Blessing Bags Packed



Our Youth Group (grades 6-12) packed 100 Blessing Bags which can be found near the entrances of the worship and office buildings at St. Philip. Each bag has multiple different types of non-perishable food. Feel free to grab a Blessing Bag to carry in your vehicle.

The hope is that these bags can be given to those in our community who are asking for help on the streetcorners we pass as we're driving. Treating people with dignity and respect goes a long way towards recognizing Christ in each of us.



## Families Together Emergency Pantry Donations Delivered!

This past month, St. Philip collected supplies that were needed in the Families Together Emergency Pantry.

This pantry doesn't stock food. Instead, it stocks a lot of the beginning staple supplies that people who are moving into an apartment or home with nothing to their name might need like sheets, pots/pans, cleaning supplies, etc.

A BIG Thank You to everyone who donated supplies!



## Shoe Collection Drive (March 3 – April 21)

Very similarly to our annual Coat Collection Drive, in partnership with Refugee Hope Partners (RHP) and Brown Bag Ministries (BBM), St. Philip and other local area congregations and agencies will be collecting new and slightly used shoes of any kind, size, or shape from March 3 through April 21.

These shoes will be sold for \$1 to those in the refugee community here in the Triangle at the end of April. If you have any shoes that you would like to donate, please drop them off in the bins that are located and marked for the Shoe Drive near any of our entrances.

If you have any questions, please email [Kai@st-philip.org](mailto:Kai@st-philip.org)

# Outreach Calendar 2024

To help everyone in the congregation know more of what is coming up this year, we wanted to share our tentative Outreach Calendar for 2024 with you. Please note that these dates are subject to change and that if there are any needs that pop-up throughout the year we may add some additional opportunities for outreach.

## Outreach Focus Areas

- **January 1 – Feb. 25**  
Season of Sabbath. We don't have a major focus, but will continue to support ongoing opportunities & assist with as needed requests from our partner organizations.
- **March 3- March 24**  
Camp Agapé Financial Appeal
- **March 3 – April 21**  
Shoe Collection dates
- **April 21- May 31**  
Families Together Spring Fundraising Campaign Support
- **June 16-August 11**  
Summer Reading Buddies Program (dates TBD)
- **July 7 – August 11**  
Back to School Collection Drive
- **Sept. 8**  
God's Work. Our Hands. Sunday of Service
- **Sept. 8 – November 8**  
Coat Drive Collection Begins
- **Sept. 8 – Oct. 6**  
North Raleigh Ministries Food Drive (NRM)
- **November 9**  
Coat Sale at Refugee Hope Partners (RHP)
- **November 10 – December 12**  
Holiday Smiles

## Ongoing Opportunities

(NRM) – Volunteer at the Food Pantry

(NRM) – Volunteer at the Thrift Shoppe(s)

(RHP) – Brown Bag Ministries on the 2<sup>nd</sup> & 4<sup>th</sup> Saturday's each month

(RHP) – Volunteer for the "Homework Help Program"

## Want to get connected?

If you are interested in finding ways to plug-in or in getting additional information about any of our Outreach Opportunities, please contact [Kai@st-philip.org](mailto:Kai@st-philip.org)

# Faith & Fellowship

## Monthly Breakfast Group—

Tuesday 3/19 at 9:30 am

We will meet at Falls River Café

10630 Durant Rd. (use the Bojangles driveway to their parking).

Spread the word and invite a friend for this casual time of fellowship and conversation!

Contact Frank Bouknight for more information. [bouknightf@yahoo.com](mailto:bouknightf@yahoo.com) or 919-302-1812

## Pub Ministry

Pub Ministry will meet on Tuesday 3/26 at 6:30 pm - at Saints & Scholars, 809 Spring Forest Rd.

Contact Dave Wahlstrom at [dave00256@gmail.com](mailto:dave00256@gmail.com) to learn more.



We will meet at 6:30 pm on 3/26/24 at Bahama Breeze

Questions?

contact Carol Rogers [parakayaker@gmail.com](mailto:parakayaker@gmail.com)

Everyone is invited!!



12:00 pm on Thursday, March 7<sup>th</sup>

At Olive Garden on Capital

Please contact Debbie Voress for the reservation.

919- 782-2622

Every 1st Thursday!

Hope to see you there!

## Adult Book Club

Everyone is welcome!

Our next meeting is on March 26<sup>th</sup> at 10am in the Parlor.

We will be discussing *The Book of Lost Names* by Kristin Harmel. A World War II historical fiction novel. It starts in 1985 when 85-year-old Eva Traube Abrams is shelving books at the Florida library where she works. She sees a magazine article with a picture of a German librarian holding a book that had been confiscated by the Nazis.

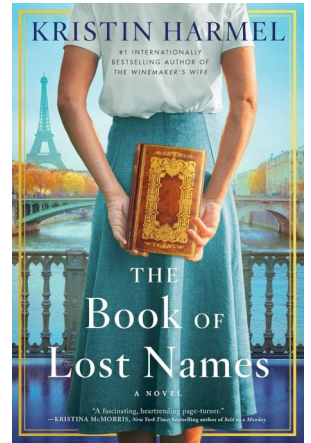
Available at the Wake County Library.

Everyone is welcome,

We hope to see you there!

Contact Kathryn Edwards for more info.

[itsmekge@gmail.com](mailto:itsmekge@gmail.com)



On the second Tuesday of the month we get together for a shared lunch, good conversation and an interesting program.

Everyone is welcome to attend!

**March 12<sup>th</sup> at 11:30 am** in Luther Hall.

Please RSVP to Carole Mason in order to plan.  
919-210-0727.





## St. Philip Lutheran Preschool

February was filled with LOVE as we celebrated Valentine's Day showing our friends and families lots of love in many ways! At the end of the month, we began learning about those that help us in our community. A dental hygienist and dentist visited our classes and taught us how to take care of our teeth. It was lots of FUN!!

In March, we will continue learning about more community helpers as paramedics from Wake County EMS will visit us and we will go inside the ambulance, too! Also, we will visit Fire Station 22 and learn about fire safety!! We will have "Character Day" and dress up as a character from our favorite storybook, parade around the school, enjoy singing songs and reading books with our friends!

Registration for the 2024-2025 school year is ongoing! Some of the classes are filled but if you or a friend would be interested in attending next year, please contact us at 919-870-5841 or 919-818-9585. We have wonderful nurturing teachers, large classrooms, and an atmosphere of love and caring! Thank you ALL for your continued support, prayers, and love for the preschool!!

You may contact Leigh Anne Barham at 919-870-5841 or 919-818-9585 for more information.



### The Bells of St. Philip still needs You!

Have you ever wondered what it would be like to ring bells? Well an opportunity is here for you! We need new ringers to pick up bell notes that there aren't enough people to play them. You'll learn how to ring and will be able to play during worship.

No previous experience necessary, just come ready to have some fun & the desire to try a new way to praise God!

Practice is at 5:00 Sunday afternoons—join us!

Questions? Contact Regan Chuhran at:

[chuhrare@gmail.com](mailto:chuhrare@gmail.com)



## Christ Caring for People through People

That's the motto of Stephen Ministry. The Stephen Minister's role is to bring God's love into the lives of people who are going through a time of transition or experiencing a crisis.

### What do Stephen Ministers do?

They listen, care, support, encourage, and pray with and for a person who is hurting. And during this confidential, one-to-one, caring relationship, God's healing love comes pouring through.

If you or someone you know is going through a difficult time—large or small—and could benefit from the caring presence of a Stephen Minister, talk to Pastor Tim or a Stephen Ministry Leader.

***Our Stephen Ministers are ready to care for you!***

Stephen Leader:

[Kathy Blum](#)



## Save the Date!



March 16th

8:30 am—12 noon

## Property Ministry Work Day

Many volunteers will be needed to join in the Spring Property Work Day! Saturday morning, 3/16—8:30am-12

We will be cleaning interior furniture, HVAC air vents, polishing carvings, moving pews, dusting lights, washing windows, cleaning gutters, normal yard maintenance and we hope to finish trimming the shrubs behind educational building.

Questions? Contact Jerry Rimmer at [djrimmer@bellsouth.net](mailto:djrimmer@bellsouth.net)

St. Patrick used the shamrock to teach people about the Godhead.

Holding up a shamrock, he challenged them, "Is this one leaf, or three?"

Inevitably, people replied that it was both, prompting St. Patrick to draw the analogy that so, too, is God: one God in three Persons — the Holy Trinity.



# Message from Finance Committee

Dear Brothers and Sisters in Christ,

On behalf of the Finance Committee, I am pleased to provide this report to kick off 2024 financial results. We've had several strong years in succession, so we begin the year on solid footing.

Through January, our income was \$50,187, or \$2,413 below plan, while expenses were \$48,979, or \$6,571 below plan. Income exceeded expenses by \$1,208.

While it is disappointing to miss our income target in the first month of the new year, I am confident that we will rebound in the coming months. As a congregation, we approved the 2024 budget in December and I know we will respond together. Your generosity and commitment to our mission never cease to amaze.

Thank you for all you do! Please continue your generous support of our ministries at St. Philip so we can grow in our calling to serve our Lord and His people.

Blessings,  
 Jim Beck  
 Finance Chair

## A New Look—

Our online financial partner, Vanco, has updated and improved their website where you go to give to St. Philip from the church's website. We think you'll find it much more user friendly. If you have questions or difficulties with the site, please contact the church office.



				January, 2024 Financial Summary		
Giving	Actual	Plan	%			
January 2024	\$ 50,187	\$ 52,600	95%			
Year to Date	\$50,187	\$ 52,600	95%			
Category	Current Month Actual	Current Month Plan	%	YTD Actual	YTD Plan	%
<b>Income</b>						
General Fund	\$46,161	\$ 44,167	105%	\$46,161	\$ 44,167	105%
Other Income	\$ 4,026	\$ 8,433	48%	\$ 4,026	\$ 8,433	48%
<b>Total Income</b>	<b>\$ 50,187</b>	<b>\$ 52,600</b>	<b>95%</b>	<b>\$50,187</b>	<b>\$52,600</b>	<b>95%</b>
<b>Expenses</b>						
	\$ 48,979	\$ 55,550	88%	\$ 48,979	\$55,550	88%
<b>Net Gain/(Loss)</b>						
	\$ 1,208	\$ (2,950)		\$ 1,208	\$ (2,950)	

The 2024 Annual Budgeted Revenue needed to meet expenses is \$632,3018





Sun	Mon	Tue	Wed	Thurs	Fri	Sat
					1 10:00 am Al Anon 7:00 pm AA	2 9:00 am Council Retreat 2:00 pm Shiloh Choir 7:00 pm AA
3 9:00 am Crossing Contemporary Worship 10:00 am Augsburg Class 11:00 am Traditional Worship 1:30 pm Shiloh Restoration 6:00 pm Youth Group	4 1:30 pm Staff 6:00 pm Girl Scouts 6:30 pm Property Team	5 5:30 pm Girl Scouts 7:00 pm Boy Scouts	6 9:30 am Senior Adult Ministry 10:30 am Pastor's Bible Study 6:30 pm NA 6:30 pm Taizé Worship 7:00 pm Pastor's Bible Study	7 12:00 pm Ladies Lunch 6:30 pm Girl Scouts 6:30 pm NA 6:30 pm 7:00 pm Voices of Praise	8 10:00 am Al Anon 4:30 pm Girl Scouts 7:00 pm AA	9 10:00 am Brown Bag Ministry 2:00 pm Shiloh Choir 7:00 pm AA
10 9:00 am Crossing Contemporary Worship 10:00 am Augsburg Class 11:00 am Traditional Worship 1:30 pm Shiloh Restoration 5:00 pm Handbells 6:30 pm Congregation Council	11 1:30 pm Staff 6:00 pm Girl Scouts 6:00 pm Stephen Ministry	12 11:30 am Saints & Sinners 7:00 pm Boy Scouts 7:00 pm Preschool Board	13 10:30 am Pastor's Bible Study 6:30 pm NA 6:30 pm Taizé Worship 7:00 pm Pastor's Bible Study	14 10:00 am Quilting Group 6:30 pm Girl Scouts 6:30 pm NA 7:00 pm Voices of Praise	15 10:00 am Al Anon 4:30 pm Girl Scouts 7:00 pm AA	16 2:00 pm Shiloh Choir practice 7:00 pm AA
17 9:00 am Crossing Contemporary Worship 10:00 am Augsburg Class 11:00 am Traditional Worship 1:30 pm Shiloh Restoration 4:00 pm Kingdom Kids 5:00 pm Kid/Youth Dinner 5:00 pm Handbells 5:30 pm Youth Group	18 1:30 pm Staff 6:00 pm Girl Scouts	19 9:30 am Breakfast Group 5:30 pm Girl Scouts 6:30 pm Stewardship 7:00 pm Boy Scouts	20 10:30 am Pastor's Bible Study 6:30 pm NA 6:30 pm Taizé Worship 7:00 pm Pastor's Bible Study	21 6:30 pm Girl Scouts 6:30 pm NA 7:00 pm Voices of Praise	22 10:00 am Al Anon 7:00 pm AA	23 10:00 am Brown Bag Ministry 2:00 pm Shiloh Choir 7:00 pm AA
24 <b>Palm/Passion Sunday</b> 9:00 am Crossing Contemporary Worship 10:00 am Augsburg Class 11:00 am Traditional Worship 1:30 pm Shiloh Restoration 5:00 pm Handbells	25	26 10:00 am Book Club 6:30 pm Fellowship Group 6:30 pm Pub Ministry 7:00 pm Boy Scouts	27 6:30 pm NA 7:00 pm Voices of Praise	28 <b>Maundy Thursday</b> 10:00 am Quilting Group 12:00 pm Worship 6:30 pm Girl Scouts 6:30 pm NA 7:00 pm Worship	29 <b>Good Friday</b> 12:00 pm Worship 6:30 pm Girl Scouts 6:30 pm NA 7:00 pm Worship	30 2:00 pm Shiloh Choir 7:00 pm AA
31 <b>Easter Sunday</b> 9:00 am Crossing Contemporary Worship 10:00 am Augsburg Class 11:00 am Traditional Worship 1:30 pm Shiloh Restoration						

# Easter Lilies



If you would like to place a lily in the Church Sanctuary to decorate for the Easter season, complete this form and place it in the offering plate or drop it off at the church office. Check payable to "St. Philip Lutheran Church" for \$13.00 and

note "Easter Lilies" in the memo line. If you would like to donate to the large palms please indicated below.

[To order online click here](#)

**The deadline is Palm/Passion Sunday, April 2<sup>nd</sup>**

Number of Lilies \_\_\_\_\_ Total \$ \_\_\_\_\_

Large Palm Donation Total \$ \_\_\_\_\_

Given in Honor of \_\_\_\_\_

\_\_\_\_\_

Given in Memory of \_\_\_\_\_

\_\_\_\_\_

By \_\_\_\_\_

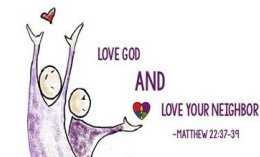
Phone \_\_\_\_\_

*Please print clearly the name will be in the bulletin on Easter*

## St. Philip Lutheran Church

7304 Falls of Neuse Road  
Raleigh, NC 27615  
919-846-2992

[www.St-Philip.org](http://www.St-Philip.org)



WE SHARE THE LOVE OF CHRIST!

Rev. Tim Poston  
Senior Pastor  
[Pastor@st-philip.org](mailto:Pastor@st-philip.org)

Kai Thurow  
Outreach & Youth Ministries Coordinator  
[Kai@st-philip.org](mailto:Kai@st-philip.org)

Regan Wang  
Director of Worship & Music Ministries  
[chuhrare@gmail.com](mailto:chuhrare@gmail.com)

Jane Gue  
Office Administrator

[Facebook](#)  
St. Philip Lutheran Church, Raleigh



Twitter  
[@St\\_PhilipELCA](#)



Instagram  
[stplcraleigh](#)



**WORSHIP WITH US THIS Easter**

9:00 Crossing Contemporary  
11:00 Traditional Lutheran

MARCH 31, 2024  
In person, Facebook, YouTube

St. Philip Lutheran Church  
St-Philip.org