

# The Epistle

St. Philip Lutheran Church Newsletter

May, 2017

## Pastor's Message

Within the rhythm of the church year, the month of May is often a time of endings. That's no different for us here at St. Philip. The bell choir has its last rehearsal on April 30<sup>th</sup>. The Voices of Praise adult choir will have its last rehearsal on May 10<sup>th</sup>. The last night of GROW is May 17<sup>th</sup> which is also the last night for Youth Groups and the Kids Choir. Monday morning and evening Bible studies conclude on May 22<sup>nd</sup>. Sunday School wraps up on the last Sunday of the month.

As we face these endings, we extend our thanks to those who make these important ministries happen within the life of our congregation: bell ringers, choir participants, youth group leaders and members, GROW cooks, Bible study participants, and Sunday school teachers and participants. Each one of these ministries gives participants opportunities to nurture relationships, use their gifts, and grow in faith. They are ways that we come to know more about the God who loves us and the people whom God has gathered to share our life of faith. My hope is that you will join with me in saying "thank you" to those who organize and participate in these meaningful ministries.

The good news is that even as ministries wrap up, some ministry opportunities continue and others begin. For the youth and children in our congregation there will be day camp, vacation bible school, campfire, and a mission trip. Adults will have opportunities for Bible study and small group conversations. I hope that you are making plans to attend an upcoming softball game!

We'll continue to gather for worship each Sunday at 8:45 and 11:00 a.m. Brown Bag Ministry will continue to prepare and deliver meals on the 2<sup>nd</sup> and 4<sup>th</sup> Saturday mornings of each month. Committees will carry out their tasks and fellowship events will happen. There may even be some surprises along the way!

As you come and go in the months ahead, be sure to greet those you see. If you don't know someone's name, chances are they don't know yours' so take the initiative and introduce yourself. Nametags help us all remember and recall names! Look for ways to be involved in the life of the congregation this summer. When you're in town, please be sure to attend worship. We miss you when you're not here.

My friends, as I look back over this program year (Sept. - May), I give thanks for the leaders and partners in ministry who organize and carry out a wide variety of ministries, for those who plan and serve in worship, for those who tend to our property and facility, for those who labor to make sure we can enjoy a good meal at GROW and other fellowship events, for those who serve our neighbors in need, and for those who give their time, talent, and treasure to ensure that the lights are on and we have all that we need to do the work that God gives us to do.

May God bless you today and always,

*Pastor Pam*

### In This Issue

1. Pastor's Message
2. Vicar's Message

3. Opportunities
4. Worship
5. May Milestones
6. Children & Youth

7. Fellowship Groups
9. Youth Fundraiser
10. Refugee Support
11. Families Together

12. Special Dates
13. Calendar of Events
14. FYI
15. VBS Registration



# Invite

## Young Adult Picnic

The Young Adults (including college students and high school seniors) are invited to a picnic celebration on Saturday May 20<sup>th</sup>!

We will gather at 12:00 at **William B. Umstead State Park, Crabtree Picnic Shelter #2!**

Lunch will be provided and we will have some outside games to play. Come out for food, fun, and fellowship! It will be a great time to unwind from a busy semester, a tough week at work, or just to get away from everyday stresses. It will be a great time to get to know each other more! Feel free to invite friends! Please RSVP to Vicar Molly by email [vicar@st-philip.org](mailto:vicar@st-philip.org) or by cell 704-806-5914. Hope to see you there! The Crabtree Creek section is located off of US 70. Within the park, follow Umstead Pkwy., you will be able to drive to a parking lot near the picnic shelter. For the park map [click here](#).

## Vicar's Message

This past fall I added an adorable puppy to my life. Her name is Eden and she is a Golden Retriever. My passion for dogs started when I was very young where I always told myself I was going to work with dogs when I grew up. My love for dogs has only deepened as I have grown older.

Now that I am preparing to be a pastor, I still hope to work with a dog one day. One of my goals is to have Eden certified as a Therapy Dog. A Therapy Dog's job is to provide comfort and affection to people who need an extra measure of love. Many Therapy Dogs work in hospitals, nursing homes, or assisted living facilities. It is important to know that Therapy Dogs are not Service Dogs, which are trained to provide a specific service for a person with a particular medical need (seeing-eye dogs, seizure alert dogs, etc.). Unlike Service Dogs, Therapy Dogs do not have special access in public places such as stores or restaurants.

Eden is just training, but it will take a lot of practice before she can go for her certification. Right now it is simply important for her to be exposed to as many different sights, smells, people, and places as possible. For that reason, Eden will be coming into the office more often. She will be wearing a "Therapy Dog in Training" vest when we are in the office or on visits so she can start associating the vest with her job.

It also will signal to people that, like me through internship, she is training for *her* own job too. If you are around and Eden is in the office, come and say hi – it is great for her to meet a lot of people! The most important thing you can do is make sure she has all four paws on the ground before you pet her. She will have to learn that she absolutely cannot jump on people when she gets excited, because that potentially can be very dangerous for some elderly people she will be visiting. Please be patient with Eden. She may jump, bark, whine, or pull on the leash, but that's why she is in training. Every dog has to start somewhere!

Dogs are one of my favorite parts of God's creation and I believe we can learn so much from what a dog does naturally. Dogs love people unconditionally, know how to simply be present, and can provide amazing companionship to people during a tough time. I know I will be learning so much about God's love through Eden's training. I hope and pray that Eden will touch many lives in the future.

God's Peace,  
Vicar Molly

## Upcoming Newcomer Orientation

*Are you interested in learning more about the Lutheran Church and the ministries of St. Philip?*

*Are you interested in becoming part of this community of faith?*

If you answered “yes” to either of these questions, then attending a Newcomer Orientation is the thing for you!

The 2-hour Orientation is broken into 2 sessions:

Sunday, April 30<sup>th</sup> at 10 am

Sunday, May 7<sup>th</sup> at 10 am

Newcomers will be received into membership at the service they attend on Sunday, May 14<sup>th</sup>.

Pick up a brochure at the Welcome Center or in the display case outside of Kepley Hall. Please register so that we can be sure to have enough materials on hand.

**You may register by:**

- Completing the form in the brochure.
- [Click here](#) to complete the registration form
- By clicking on the event in the MyChurch app and tapping on “register.” Open the Event tab of the app and scroll through the calendar until you get to the date of your choice, then select the event and tap on “register.”
- Calling the church office at 919-846-2992.

If you have questions or need more information please contact at Pastor Pam

## Sunday Mornings at St. Philip

8:45—Crossing Contemporary  
Worship with Holy Communion

10:00—Sunday School for All Ages

11:00—Traditional Worship  
with Holy Communion



## You're Invited to Mission Table Night!

**Sunday, May 7**

Mission Tables will be set for each component of our Mission Statement: Invite, Worship, Nurture Faith, Nurture Relationships, and Serve.

At these Mission Tables, you'll have opportunities for conversation about ways that we can more fully live into our mission statement.

We'll gather for dinner (provided) at 5:30 pm. A love offering will be collected to offset the cost of the meal. Please bring a dessert to share!

Mission Table conversations will begin at 6:15.



*Come, take a place at the table  
there are seats for everyone!*

## Extravagant Welcoming

For visitors and guests, newcomers and regularly attending members, wearing your name tag is an easy way to extend friendship and a warm welcome!



If you would like a new nametag, please let Jane in the church office know!





# Worship

## WORSHIP AND PLAY ZONE

The St. Philip community is one that continues to grow! In order to become more inviting to the youngest ones in worship, we are excited to have a new Worship and Play Zone in the sanctuary.

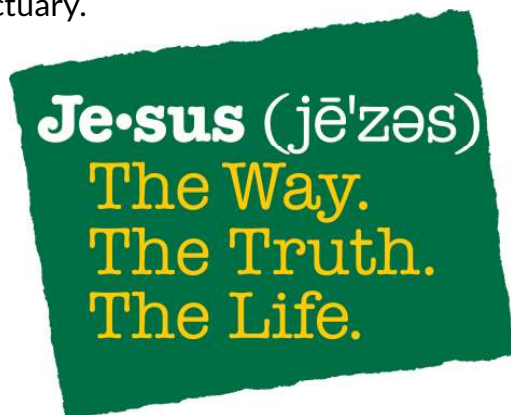
It will be filled with many activities to keep the little ones engaged during worship.



Worship & Play Zone

The Worship and Play Zone is an important addition to our life together as a community for several reasons, the main one being that we always want children in worship – they have a role to play in the body of Christ too! We want to make sure they have a comfortable space that is available for them to worship in a way that is appropriate for their age. Kids tend to be more engaged in worship when they are able to see what's going on up front, and not just stare at the back of pews. The Worship and Play Zone gives kids a safe place during worship to be able to color, play, or simply hang out without having to be separated from the rest of the worshipping community.

We have a lot to celebrate with what God is doing here at St. Philip! We hope this Worship and Play Zone will be meaningful to the littlest ones who step through the doors of the sanctuary.



## Children in Worship

### To the PARENTS OF OUR YOUNG CHILDREN...

- ★ Relax! God put the wiggle in children; don't feel you have to suppress it in God's house. All are welcome!
- ★ Sit toward the front where it is easier for your little ones to see & hear what's going on at the altar.
- ★ Quietly explain the parts of the liturgy and actions of the pastor, vicar, assisting minister, choir, etc.
- ★ Sing the hymns, pray, and voice the responses. Children learn liturgical behavior by copying you.
- ★ Children, feel free to do your artwork on the back of the bulletin. We would love to see your masterpieces!
- ★ If you have to leave the service with your child, feel free to do so, but please come back! Sharon is in the nursery if your child would enjoy playing in there.  
As Jesus said, "Let the little children come to me."



### To the MEMBERS OF THIS CHURCH...

- ★ Please welcome our children and give a smile of encouragement to their parents. Lend a helping hand to parents when you can. Many of you can relate to the stress of having young children.
- ★ Remember that the way we welcome children in church directly affects the way they respond to the Church, to God, and to one another.
- ★ Let them know that they are at home in this place of worship.



# Nurture

## First Camp Experience Blessing

Attention rising third graders!!!

Beginning this summer, you are now old enough to attend sleep away camp at Camp Agapé with St. Philip! Camp is an experience that leaves lasting memories in faith development. At camp youth get to learn more about themselves and their faith while enjoying the blessings of an intentionally Christian community, new friendships, Creation, games, music, devotions, swimming, hiking, crafts and on and on and on.



We would like to bless and gift our **rising third graders** on **May 7th, at both services**, to mark this milestone!!

## Graduate Milestone Celebration

Let us gather together to celebrate our graduates as they prepare to enter the next phase of their lives.

We will bless and gift our graduates on **May 21<sup>st</sup> at both services.**  
Join us!!



## Care Packages

This week our high school youth put together 22 care packages to be sent to our college students!

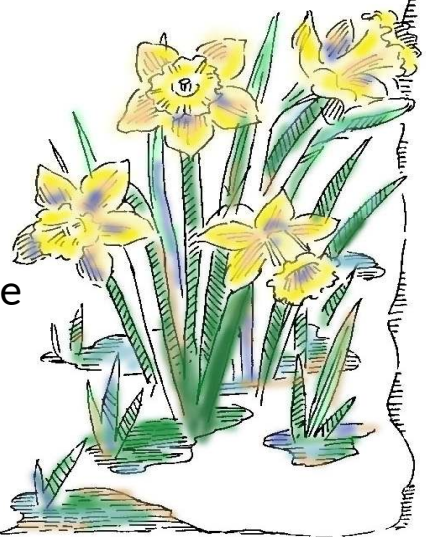
They're complete with candy, caffeine, sunscreen, study aides, and encouraging notes as exams get started.

Please keep our college youth in your prayers as they finish up the year and begin moving back home!

## New Mothers Blessing

Join us on **May 14<sup>th</sup>** to celebrate and gift our new mothers.

We will celebrate this milestone at both services.





**Agapé Day Camp  
at Grace!  
June 19-23**

<b>Who?</b>	Rising 1st-8th graders
<b>What?</b>	Agapé Day Camp led by the most awesome camp counselors ever!
<b>Where?</b>	Grace Lutheran Church, Six Forks
<b>When?</b>	June 19-23, 9am-3pm
<b>Why?</b>	To learn about Creation, God, themselves. To enjoy the company of other young folks. To have fun singing, dancing, crafting, playing, serving...
<b>COST?</b>	\$70 (included t-shirt!)



## Preschool Vacation Bible School

**June 19-22  
9:30-11:30**



**"I Just Want to Be a Sheep" . . . here is the Lamb of God who takes away the sin of the world!"**  
John 1:29

PVBS serves children from 3's - rising Kindergartners, including those having completed PreK. All children must be potty trained!!

*Registration deadline is June 14th!  
The REGISTRATION FORM  
is available to print at the end of this newsletter.*

## CAMPFIRMATION AT CAMP AGAPE

<b>Who?</b>	Rising 8th grade GIFT youth
<b>What?</b>	Campfirmation led by awesome camp counselors as well as Pastor Pam, Vicar Molly & Cathryn!
<b>Where?</b>	Camp Agapé
<b>When?</b>	June 25-30
<b>Cost?</b>	\$300.00 (St. Philip will pay \$119 of the total cost of the camp week).



## Men's Softball

### The season is underway!

St. Philip fields a team in the North Raleigh Men's Softball League, which is run by Bayleaf Baptist Church.

The softball team serves as a wonderful means of fellowship and fun during the summer.

We play once or twice a week during the season, which typically begins in mid-April and ends in late July (including a single-elimination tournament).

The next few games will be at Bay Leaf Baptist 12200 Bayleaf Church Rd., (north of 1540 off Possum Track Trail, off of Six Forks Rd.).

### *Come on out and cheer St. Philip on!*

#### May 2017 Softball Schedule

Date	Away	Home	Venue
5/4	St. Philip vs	Mt. Vernon	Bay Leaf
5/8	St. Philip vs	Greater Love	Bay Leaf
5/17	Asbury vs	St. Philip	Bay Leaf
5/23	St. Philip vs	Bay Leaf	Bay Leaf
5/30	Rain Make up		Bay Leaf



## Saints & Sinners

Come join the Saints and Sinners at 11:30 on Tuesday, May 9<sup>th</sup>. We hope you will make plans to attend as there will be good food, fellowship and we will enjoy Dickie Warlick's music again. Dickie has written songs since age eight and he loves to sing songs about Jesus. He also sings pop, country, rock'n' roll, and blues songs. Please RSVP to reserve your place for lunch by calling Carole Mason at 919 872-1518, by May 5<sup>th</sup>. Lunch is \$7.00

## Concert

In honor of the 500<sup>th</sup> Anniversary of the Lutheran Reformation, Hillyer Community Chorus with a live orchestra sings "Mass No. 9 in C Major" by Joseph Haydn along with several other non-Latin choral pieces to complete the program.

A special arrangement of "A Mighty Fortress is Our God" by Dan Forrest will also be performed as commissioned in honor of the 500<sup>th</sup> anniversary of the Lutheran Reformation. This arrangement offers an aural glimpse of Luther's hymn through history incorporating his original version to harmony and counterpoint based on J.S. Bach's harmonization for the Lutheran Church 200 years later to modern day material based on Luther's original rhythms and melodic intervals.

Sunday, May 21, 2017, 4:00 pm at Hillyer Community Church 718 Hillsborough St. Free and open to public. For more information, contact Julie Helmey at 919-280-8864 or [jhelmey@earthlink.net](mailto:jhelmey@earthlink.net).

## Ladies Lunch

The next lunch will be held on Thursday, May 4<sup>th</sup> at Bella Italia Ristorante - 10630 Durant Rd. Lunch begins at noon. They serve Italian cuisine—sandwiches, pasta, pizza, calzones, and more! Please make your reservation with Claire Muller, 919-900-8443 [claire6078@att.net](mailto:claire6078@att.net) (new email) Hope to see you there!





## Join us for G.R.O.W.

(Get Renewed On Wednesdays)

Wednesdays beginning at 5:45

Last night - May 17<sup>th</sup>

For a midweek renewal through  
a meal, music, youth groups, small groups and fellowship!!

Free will donations are encouraged.

Bring your friends!  
All are Welcome!!

5:45 - 6:30	Meal (Luther Hall)
6:45 - 7:30	Joyful Noise Kidz Choir
6:45 - 8:00	MS & HS Youth Groups
6:45 - 8:00	Small Groups (last meeting-5/3)
7:30 - 8:30	Voices of Praise Adult Choir

### Senior Adult Ministry Meeting

Please join us for our next meeting on  
Wednesday, May 2<sup>nd</sup> at 10:00 am  
in the Library.  
All are welcome!



### Men's Breakfast Club

Will meet on May 15<sup>th</sup> 9:30 am at  
The Pickled Onion at the corner of  
Falls of Neuse and Strickland Rd.  
Come and enjoy good food and fellowship.  
To reserve your place contact Frank Bouknight @  
919-302-1812 or [bouknightf@yahoo.com](mailto:bouknightf@yahoo.com)



### Puzzle Get Together

Tuesday, May 23<sup>rd</sup> at 12:30  
Come, relax, and have fun completing a  
puzzle. Questions? Contact Claire Muller  
at 919-900-8443 or [claire6078@att.net](mailto:claire6078@att.net)

### Women's Fellowship Group

We will meet at 6:30 pm on Tuesday, May 23, 2017, and will meet at Salt & Lime  
Cabo Grill, 6006 Falls of Neuse Rd. Their  
Baja Peninsula cuisine ranges from street  
food & tacos to European style dishes.

We gather together once a month inviting  
women of the congregation to come for  
good food, fellowship & conversation.  
Contact Carol Rogers for more  
information at [parakayaker@gmail.com](mailto:parakayaker@gmail.com)



### Men's Pub Ministry

Watch the weekly eNews email for the location of our  
May 25<sup>th</sup> meeting place.

Men's Pub Ministry is an opportunity for men in the  
congregation to meet and socialize once a month. We  
select places where we can talk and have a beer or  
other beverage and, perhaps, a meal.

All men are welcome, we hope to  
see you there!







With the support of this congregation our children and youth are able to experience faith building activities like camp, mission trips, Vacation Bible School, service in the community, retreats, unique learning experiences and so on and so on and so on. It has always been clear that the children and youth of this congregation are valued, invested in, and supported!

For the whole month of May we will be inviting your continued support in the second annual Youth Fundraiser. You will see a wall of envelopes labeled from \$1 all the way through \$200. We invite you to choose an envelope and donate the amount on the front to our children's and youth programs.

Inside each envelope you will also find the name of a child in our faith family and what they may be up to in the coming year at St. Philip. Our hope is that you might keep this child in your prayers! With your continued financial and prayer support, the sky is the limit for the experiences we might provide for our youngest faith walkers!

All of the money raised will be used for scholarships, retreats, mission trips, camps, National Gathering—in other words for faith building experiences for our children and youth! Our hope is that financial stress never gets in the way of faith experiences!



## Senior Ministry Book Club

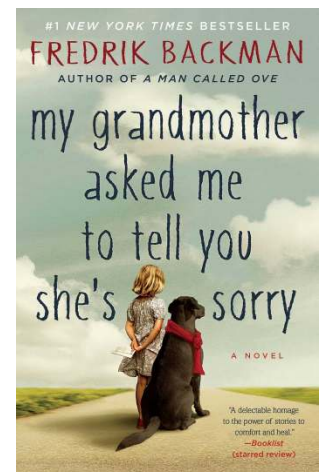
On Tuesday, May 23, the book club will meet in the Parlor from 10-11:30 am to discuss *My Grandmother Asked Me to Tell You She's Sorry* by Fredrik Backman.

The story is told with the same comic accuracy and beating heart as Backman's bestselling debut novel, *A Man Called Ove*. It is a story about life and death and one of the most important human rights: the right to be different.

Elsa is seven years old and different. Her grandmother is seventy-seven years old and crazy—as in standing-on-the-balcony-firing-paintball-guns-at-strangers crazy. She is also Elsa's best, and only, friend. At night Elsa takes refuge in her grandmother's stories, in the Land-of-Almost-Awake and the Kingdom of Miamas, where everybody is different and nobody needs to be normal.

When Elsa's grandmother dies and leaves behind a series of letters apologizing to people she has wronged, Elsa's greatest adventure begins. Her grandmother's instructions lead her to an apartment building full of drunks, monsters, attack dogs, and old crones but also to the truth about fairy tales and kingdoms and a grandmother like no other.

We meet the fourth Tuesday of the month and we rotate leading the discussion. Contact Kathryn Edwards [itsmekge@gmail.com](mailto:itsmekge@gmail.com) or Carol Williamson [wilc321@aol.com](mailto:wilc321@aol.com) for more information.





# SERVE

## Refugee Support Ministry Changes

Refugee Support Ministry exists to feed the hungry, to clothe those without, to show Christ's love and compassion, to find ways to equip refugees with the tools they need to overcome the obstacles in their lives. We accomplish these tasks through collaboration with other organizations, ministries, churches, etc.

**Brown Bag Ministry (BBM)** continues to be a place where we build relationships with those in the Cedar Point community, where we share a meal, where we build awareness of this refugee community to the remainder of the community, and where we call folks to action- to be Christ's hands and feet.

**Abundance Ministry (AM)** is a place where newly arrived refugees and refugees in crisis can come to get clothes and basic housewares. We work with the resettlement agencies in the area (USCRI and LSC) as well as by word of mouth to ensure we are a resource that these folks can take advantage of. Due to changes that we are seeing with the drastic slow-down of incoming refugees in the area, Abundance Ministry is making some adjustments! While we are still serving newly arrived refugees and refugees in crisis, our donations are surpassing the needs at this point. As a result, Abundance Ministry will accept only **in season, clean, gently-used** clothing for the following:

- Women's long skirts and dresses (all sizes)
- Men's small and medium
- All infant and toddler clothes
- All boy's clothes
- All girl's clothes

Please consider donating other items to North Raleigh Ministries or A Note in the Pocket.

In addition to BBM and AM, St. Philip has formed a **Refugee Task Force**. This task force is comprised of area ministries, churches, resettlement agencies, and other groups that all have a vested interest in seeing the refugees in our area succeed. With the thought that working together would allow us to combine our efforts and more efficiently and effectively help to equip the refugee population to reach their goals of finding meaningful work, live in permanent homes, see their families thrive in this new culture, and contribute to society in a meaningful way. Through working with the community itself, we have found that the most pressing needs of the refugee community lies in relational ministries that will equip them to thrive. These opportunities include:

- Tutoring/ homework helper
- Medical mentors
- Family friend
- ESL tutor
- Job guides

As we are ***blessed to be a blessing***, please consider supporting our refugee neighbors in one of these manners. If you are interested in learning more about these opportunities, please contact Stacey Bell at [raleighbells@yahoo.com](mailto:raleighbells@yahoo.com)

## Quilters

The Lutheran World Relief Quilters are looking for willing hands who can use scissors, tie a knot and who enjoy a warm blanket to help us every 2<sup>nd</sup> & 4<sup>th</sup> Wednesday at 9:30 a.m. in the lower level under Luther Hall.

Please consider becoming involved in this worthwhile endeavor. Questions: contact Barbara Burdette at [bburd45955@aol.com](mailto:bburd45955@aol.com)





### **Campaigning!!**

The Hope Begins with a Home annual spring campaign is in full swing and we are making great progress as we have raised about \$57,000 as of mid-April! We want to say “thank you” to our teams for all their hard work and to all who have donated so generously so far! You’ve also organized and participated in some fantastic events like the St. Paddy’s Day 8k run, which was immensely fun and a big success with over 2,000 runners participating. The Home for Families Happy Hour brought supporters, staff, and board members together at Trophy Tap and Table. And the 7<sup>th</sup> Annual Serve the Homeless was held thanks to an awesome team of volunteers dedicated to this amazing event. This may be the last year of Serve the Homeless but we are hopeful that we can find a way to keep it going for those who are passionate about volleyball and ending family homelessness.

### **Help us meet the match!**

Between now and May 31<sup>st</sup>, your contribution can be matched through our Stewards Fund Matching Grant if we meet the \$18,000 goal. For those who have contributed, thank you for helping us expand our work in the community to end homelessness for families with children. To give, visit the campaign web page at [www.hopebeginswithahome.org/](http://www.hopebeginswithahome.org/) and click the link to “Our Teams” to find your church’s team page. Your church team leads are working hard. Please help reach your team’s goal!

ST. PHILIP TEAM LEADER: Julie Helmey  
([jhelmey@earthlink.net](mailto:jhelmey@earthlink.net))

### **Needs**

We are always grateful for the kind gifts that our supporters bestow upon the families we serve. Our after school program pantry is running low. Donations of non-perishable snacks and juices for the children would be greatly appreciated. Contact Meghan Olesen, Community Engagement Coordinator at (919) 307-1892, or by e-mail, [meghan@FamiliesTogetherNC.org](mailto:meghan@FamiliesTogetherNC.org).

### **More Volunteer Opportunities**

You can create nourishment and education opportunities for families experiencing homelessness by signing up to volunteer for our garden committee. You can also make a difference by providing healthy, non-perishable snacks for our after school program. We’re grateful for any help you can provide! Contact Meghan Olesen with questions and donations by phone at (919)212-1123 ext. 232 or by email at [Meghan@famielstogethernc.org](mailto:Meghan@famielstogethernc.org)

Please keep in touch with Families Together by liking our Facebook Page ([facebook.com/families2gether](https://facebook.com/families2gether)), Twitter (@families2gether). When you share our story, the whole community benefits. Thank you again.



### **Summer Youth Mission Week**

Our youth will once again be working at *Give Kids the World* in Kissimmee, FL. July 16-22, in whatever ways are needed in order to serve young people & their families who are suffering from life-threatening diseases, difficult disabilities

Registration is now closed.



### **Calling all Volunteers!**


May 6 at 8:30 am we will be doing outside projects.

Clearing more shrubs and vines behind education building, painting and finishing exterior ceiling projects, repairing picnic table, installing door sweeps, leveling rock areas of the sidewalks to Columbarium, organizing garage storage and other general maintenance activities.

Please bring appropriate tools, gloves, etc. for these activities.





Sun	Mon	Tue	Wed	Thu	Fri	Sat
	<b>1</b> 10:00 am Bible Study 6:30 pm Bible Study	<b>2</b> 10:00 am Small Group 10:00 am Staff Mtg. 11:30 am Abundance Ministry 7:00 pm Property Team 7:00 pm Boy Scouts	<b>3</b> 10:00 am Seniors' Ministry Team 10:00 am Reading the Bible in 90 Days 12:00 pm Worship <b>G.R.O.W.</b> 5:45 pm Meal 6:45 Youth Groups 6:30 Small Groups- <i>last meeting</i> 6:45 Joyful Noise Kids 7:30 Voices of Praise	<b>4</b> 12:00 pm Ladies Lunch 6:30 pm Crossing Rehearsal 7:00 pm Columbarium Mtg.	<b>5</b> 10:00 am Al-Anon 7:00 pm AA	<b>6</b> 8:30 am Property workday 7:00 pm AA
<b>7</b> 8:45 am Crossing Contemporary Service 10:00 am Sunday School 11:00 am Traditional Service 1:00 pm Restoration Ministry Worship 1:30 pm RAFA 5:30 pm Mission Table Night	<b>8</b> 10:00 am Bible Study 6:30 pm Bible Study 7:00 pm Boy Scout Leaders	<b>9</b> 10:00 am Small Group 10:00 am Staff Mtg. 11:30 am Saints & Sinners 7:00 pm Preschool 7:00 pm Boy Scouts	<b>10</b> 9:30 am Quilters <b>G.R.O.W.</b> 5:45 pm Meal 6:45 Youth Groups 6:45 Joyful Noise Kids 7:30 Voices of Praise	<b>11</b> 6:00 pm Girl Scouts 6:30 pm Crossing Rehearsal 7:00 pm Finance & Responding	<b>12</b> 10:00 am Al-Anon 7:00 pm AA	<b>13</b> 10:00 am Brown Bag Ministry 7:00 pm AA
<b>14</b> 8:45 am Crossing Contemporary Service 10:00 am Sunday School 11:00 am Traditional Service 1:00 pm Restoration Ministry Worship	<b>15</b> 10:00 am Bible Study 1:00 pm Bridge Group 6:30 pm Bible Study	<b>16</b> 8:30 am Men's Breakfast 10:00 am Small Group 10:00 am Staff Mtg. 11:30 am Abundance Ministry 7:00 pm Boy Scouts	<b>17</b> <b>G.R.O.W.</b> 5:45 pm Meal 6:45 Youth Groups 6:45 Joyful Noise Kids	<b>18</b> 6:30 pm Crossing Rehearsal	<b>19</b> 9:30 am Preschool Spring Program 10:00 am Al-Anon 7:00 pm AA	<b>20</b> 7:00 pm AA 7:00 pm Young Adult Picnic
<b>21</b> 8:45 am Crossing Contemporary Service 10:00 am Sunday School 11:00 am Traditional Service 1:00 pm Restoration Ministry Worship 3:00 pm RAFA Concert 4:00 pm Stephen Ministry 6:00 pm Congregation Council	<b>22</b> 10:00 am Bible Study 6:30 pm Bible Study	<b>23</b> 10:00 am Small Group 10:00 am Senior Book Club 10:00 am Staff Mtg. 12:30pm Puzzle Get Together 6:30 pm Women's Fellowship 7:00 pm Boy Scouts	<b>24</b> 9:30 am Quilters	<b>25</b> 6:00 pm Girl Scouts 6:30 pm Crossing Rehearsal	<b>26</b> 10:00 am Al-Anon 7:00 pm AA	<b>27</b> 10:00 am Brown Bag Ministry 7:00 pm AA
<b>28</b> 8:45 am Crossing Contemporary Service 10:00 am Sunday School 11:00 am Traditional Service 1:30 pm Restoration Ministry Worship	<b>29</b> <b>Memorial Day</b> Office Closed	<b>30</b> 10:00 am Staff Mtg. 7:00 pm Boy Scouts	<b>31</b> 9:30 am Quilters	 <div> <b>June 4<sup>th</sup></b> - Pentecost Sunday—  <i>be sure to wear <b>red</b> in celebration of the Holy Spirit!</i>    <b>June 4<sup>th</sup></b> - Mission Table Night  <b>June 11<sup>th</sup></b> - Blood Drive </div>		

## SUNDAY SCHOOL CLASSES FOR EVERYONE!

All Classes Meet: 10:00–10:45

- **0-2 year olds:** Nursery is offered during SS.
- **2's-PreK:** Meet in the **blue room**, Ed. Bldg.
- **K-2nd:** Meet in the **red room**, Ed. Bldg.
- **3rd-5th:** Meet in the **purple room**, Ed. Bldg.
- **Confirmation (6th-7th):** Basement, Ed. Bldg.
- **Post-Confirmation (8th-12th):** Meet in the basement, Ed. Bldg. Real life faith talk in a spiritually and emotionally safe setting.
- **Augsburg Class (adult):** Library  
The Augsburg class explores Bible study with rotating facilitators.
- **Faith & Fellowship (adult):** Luther Hall  
Faith & Fellowship is a class geared around discussion, with rotating facilitators, focusing on varying topics throughout the year.



919-846-2992

[www.St-Philip.org](http://www.St-Philip.org)

### Office Hours:

Mon-Fri  
9:00 –4:00



Like us on  
[Facebook](https://www.facebook.com/St-Philip.org)

**Rev. Pam Northrup**

Senior Pastor

[pastorpam@st-philip.org](mailto:pastorpam@st-philip.org)

919-987-0102

(in case of emergency)

**Vicar Molly Markley**

Seminary Intern

[vicar@st-philip.org](mailto:vicar@st-philip.org)

**Cathryn Hewett**

Director of Faith Formation

[cathryn@st-philip.org](mailto:cathryn@st-philip.org)

**Jane Gue**

Office Administrator

[admin@st-philip.org](mailto:admin@st-philip.org)

**Y'Sang Milo**

Custodian



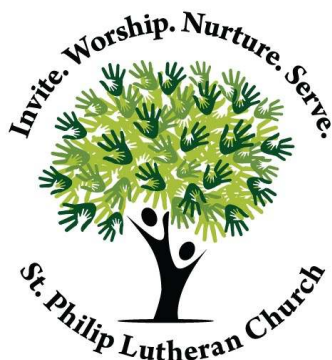
## St. Philip Lutheran Church

7304 Falls of Neuse Road

Raleigh, NC 27615

919-846-2992

[www.St-Philip.org](http://www.St-Philip.org)



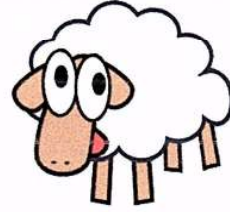
# Preschool Vacation Bible School

June 19-22

9:30-11:30

PVBS serves children from  
3's through rising Kindergartners,  
including those having completed PreK.  
All children must be potty trained!!  
Registration deadline is June 15th!

Our theme is...



i just wanna  
be a sheep

(Cut along dotted line and save top portion as a reminder!)

Child's Name: \_\_\_\_\_ DOB: \_\_\_\_\_

Home Address: \_\_\_\_\_

E-Mail Address: \_\_\_\_\_

What preschool experience does your child have? \_\_\_\_\_

In case of emergency, contact:

Mother: \_\_\_\_\_ Best Number: \_\_\_\_\_

Father: \_\_\_\_\_ Best Number: \_\_\_\_\_

Other: \_\_\_\_\_ Best Number: \_\_\_\_\_

Allergies or Other Conditions: \_\_\_\_\_

Name of ONE friend your child might like to be with during PVBS: \_\_\_\_\_

T-Shirt Size:      YXS      YS      YM      YL

There is a suggested minimum donation of \$25 to help offset the costs of  
snacks, craft supplies, and t-shirts. Please make checks payable to  
St. Philip with PVBS in the memo. Thank you for your support of this ministry!

Please check here if you do NOT give consent for St. Philip Lutheran Church to use photos of this  
youth for promotional purposes (brochure, website, displays, etc.) \_\_\_\_\_

Mail your registration form and donation to Cathryn Hewett at: St. Philip Lutheran Church, 7304 Falls of Neuse Rd.,  
Raleigh, NC 27615. Or drop it in Cathryn's registration In Box outside the DoFF office. Or register on our  
website at <http://st-philip.org>. Please contact Cathryn with any questions at [cathryn@st-philip.org](mailto:cathryn@st-philip.org).